



Inspiring Leadership

with



SEND MY FRIEND TO SCHOOL



Sustainable Development Goal

4 QUALITY EDUCATION

"Ensure inclusive and equitable quality education and provide lifelong learning opportunities for all"



**262 MILLION CHILDREN DO NOT GO TO SCHOOL
THAT'S ONE CHILD IN EVERY EIGHT
MANY CHILDREN WHO GO TO SCHOOL DO NOT LEARN
EMERGENCIES ARE MAKING THINGS WORSE**



Leadership



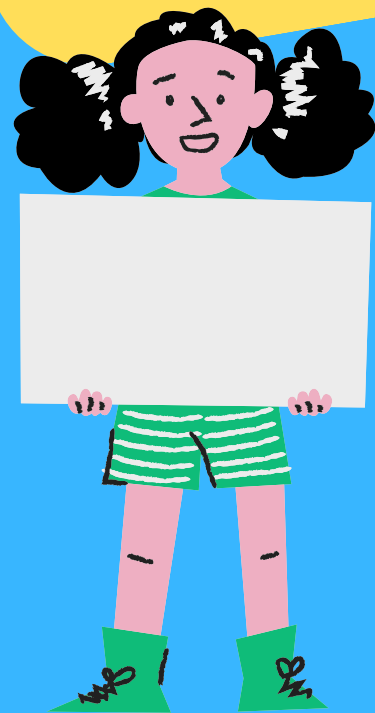
Group one

Someone said something you did not agree with and you voiced your opinion



Group two

You tried to convince someone to do something



Group three

You found a better way of doing something and told others about it.



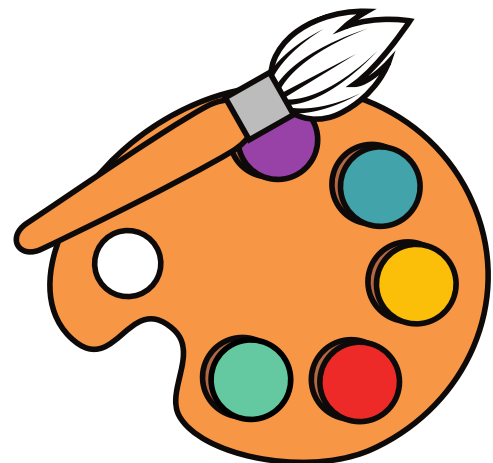
Leadership & Influencing

Send My Friend to School

Lead your school to...

Research and learn

Make creative messages



Write letters

Meet your MP

<https://youtu.be/-Z9VJFUfr0>

Influencing

How can young people at the Inspiring Leaders conference influence SDG 4?



YOU

Young people in Nottingham



Members of Parliament



Parliament



The Prime Minister & the Government



SDG4
Quality Education for All



SDG 4

"Ensure inclusive and equitable quality education and provide lifelong learning opportunities for all"

My Leadership Style

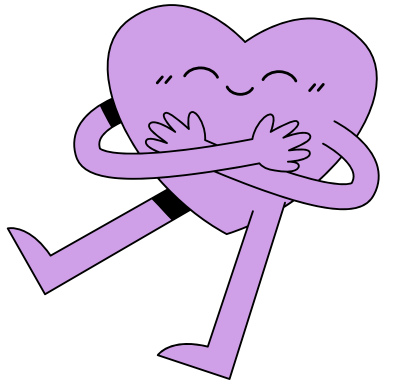
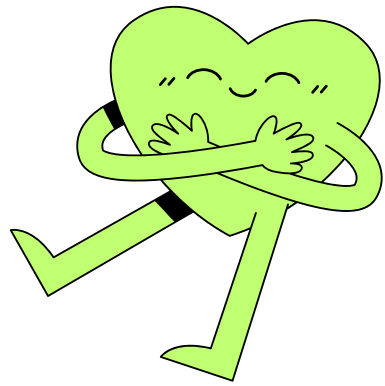
	Love it!	Sometimes	Not really
Art, painting, drawings			
Storytelling, explaining things, writing, poems			
Music, song, dance, singing			
Role play, skits, acting			
Child journalists, interviewing people			
Public speaking and giving speeches			
'Behind the scenes', research, organising, planning			
Other?			

The Leadership Game

Pick a random item in the room - a bag, a pen, a coat, anything



Imagine this item is the best thing in the whole world. It will bring happiness into anyone's life

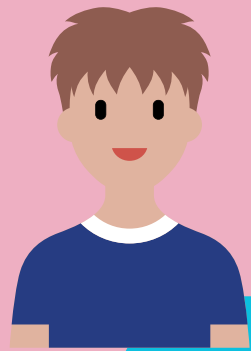


Your task is to share this item and tell everyone about it. You can do this any way you like provided it is safe and respectful. How will you do it?

First - do you want to work by yourself or in a group?

Second - how do you want to share your information? Will you be creative, musical and use drama? Or will you make a persuasive speech or use careful explanation? Think about what works best for you.

Leadership Action Plan



1 The Issue

What is the situation?

262 million children do not go to school

2 Goal

What do we want to happen?

Our MP will support education for all

3 Action

What are we going to do?
How will we do it?

4 Leadership

What skills do we need?
Who has these skills?
What skills will we learn?
What do we enjoy?

5 Indicators

What will happen if we succeed?

6 Result

What happened?



SEND MY FRIEND TO SCHOOL



OXFAM

To: My MP
Houses of Parliament
London
SW1 0AA

THANK YOU!

